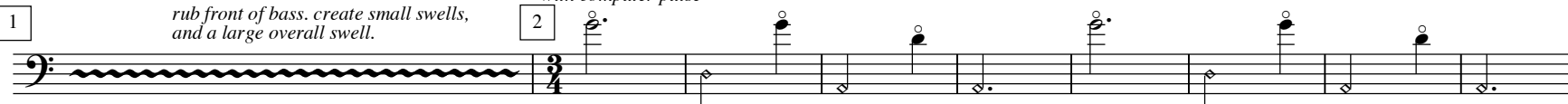


Phoenix - A Duet for Double Bass, Voice and Live Electronics

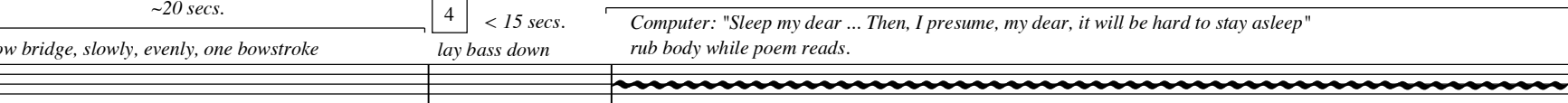
Joshua Parmenter

1 ~90 secs. ♩ = 40
rub front of bass. create small swells, and a large overall swell. *with computer pulse*

Double Bass 

pp *ff* *p* *ppp*

3 ~20 secs. 4 < 15 secs. ~60 secs.
bow bridge, slowly, evenly, one bowstroke *lay bass down* *Computer: "Sleep my dear ... Then, I presume, my dear, it will be hard to stay asleep"*
rub body while poem reads.

Double Bass 


pp

5 ~90 secs.
Comp: "I am here ... A Touch of sky..."

pick up bass... wait for sound to disappear

A Song But Fire So Sleep?! Deep breaths A - shes Phoenix riseto a rest-less waltz!


pp *ff* *pp* *ff*

Double Bass 

pp *ff*


6 ~4 secs. ~30 secs. 7 ♩ = 40 ~20 secs.
Comp: "... I still believe ..." *with computer pulse* *I'll let it sound now A Si-lent Crash TheSong of an Angel A maze of thoughts.*

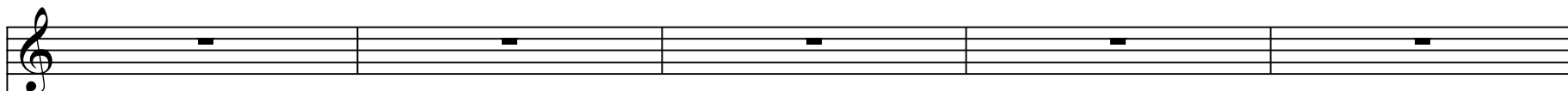
norm. *pizz.* *pp* *repeat to end*

Double Bass 

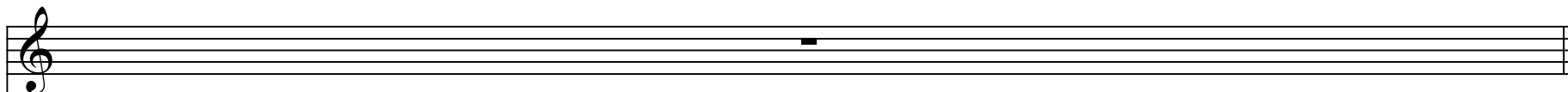
fff *ppp* *f to end*

8 ~15 secs. ~25 secs. 9 ~5 secs.
A Maze But Fire! Fire!





.B.



.B.

